



BY ALIDE ELKINK,
FREELANCE TECHNICAL
WRITER, WELLINGTON

Timber deck – sliding door

This construction sequence works through the detail for attaching a slatted timber deck to a building with a suspended timber floor and an aluminium sliding door opening onto the deck. The building cladding is bevel-back weatherboards fixed over a cavity.

BUILDING CODE Acceptable Solution E2/AS1 provides generic details for installing aluminium doors and windows with direct and cavity-fixed horizontal weatherboards.

The following details show how to connect a slatted timber deck to a building with a suspended timber floor and an aluminium sliding door opening onto the deck. Note that the flooring is omitted for clarity in Steps 1–2.

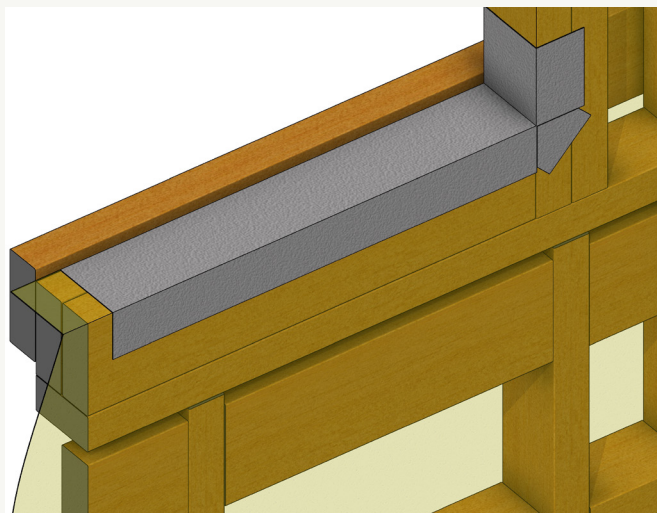
- Step 1** Fold the wall underlay into the rough opening and secure.
- Step 2** Install flexible flashing tape across the full width of the sill opening. Extend the tape 100 mm up both jambs at the bottom corners and turn out 50 mm over the face of the wall.
- Step 3** Install the sill support bar. Install the cavity battens to the underside of the sill support bar and both sides of the opening.
- Step 4** Fix the cladding up and around both sides of the opening. Fix a horizontal batten at the sill as required to suit the base of the aluminium door frame.
- Step 5** Install the sliding door and reveals into the opening. Ensure the minimum flange cover over the cladding is 8 mm at the sill and

10 mm at the jambs. Install an airseal over a PEF backing rod around the perimeter of the trim opening.

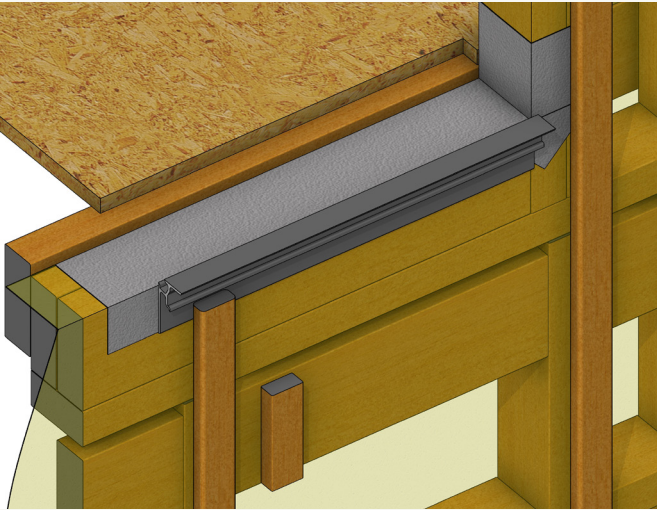
- Step 6** Install scribes to suit the weatherboard profile.
- Step 7** Install a stringer at the correct distance below the intended finished deck level. Fix with M12 bolts at maximum spacings in accordance with NZS 3604:2011 *Timber-framed buildings* Table 6.5 over 12 mm thick × 150 mm long H3.2 packers to provide a 12 mm gap for drainage. Insert 50 × 3 mm thick EPDM washers between the stringer and the cladding at the bolt fixings. Bolts are fixed through the cladding to the building structure (for example, timber studs, subfloor walls, foundation walls or piles).
- Step 8** Install joists over stringers at spans required in accordance with NZS 3604:2011 Table 7.1 – spacings at 450 mm maximum for 19 mm decking boards and 600 mm maximum for 32 mm decking boards. Ensure that the 12 mm drainage gap is retained.
- Step 9** Fix decking boards over joists retaining the 12 mm gap to cladding and ensuring that the finished deck is at least 12 mm below the underside of the door sill. ◀



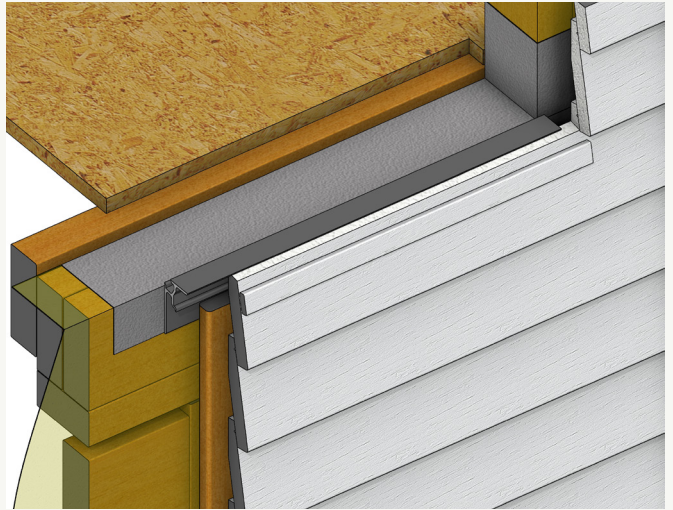
Step 1 Construction sequence.



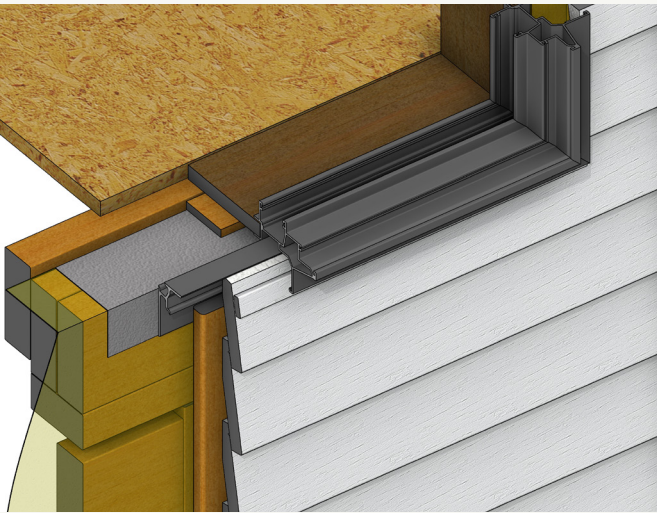
Step 2



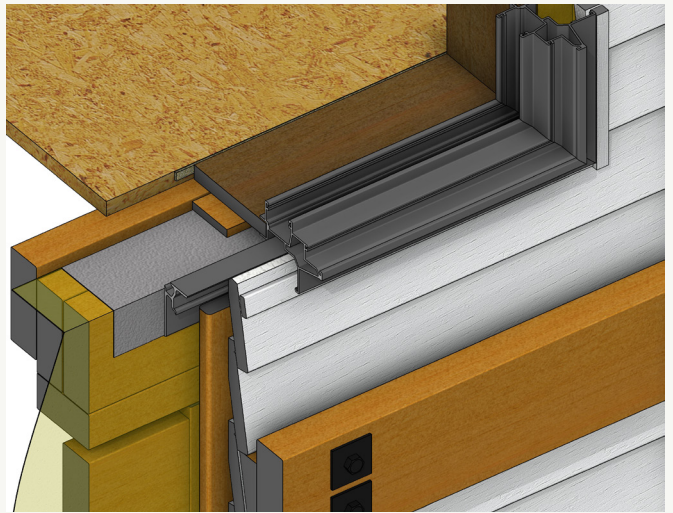
Step 3



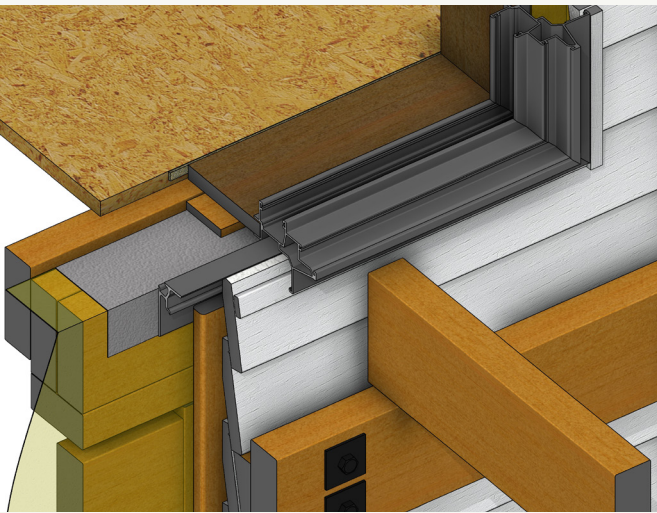
Step 4



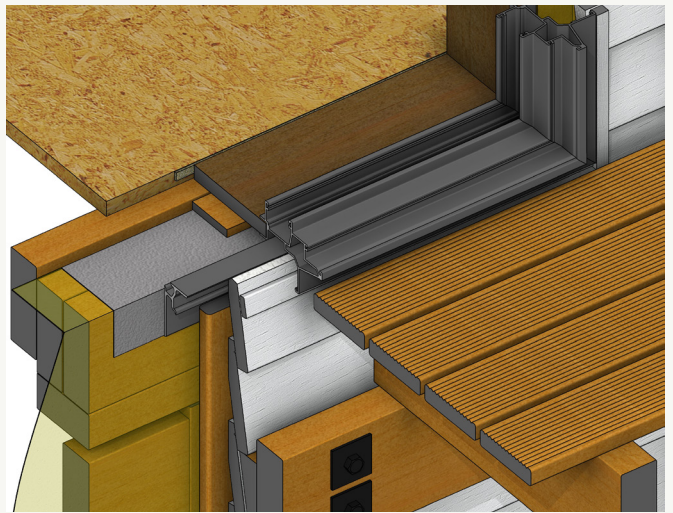
Step 5



Steps 6-7



Step 8



Step 9