



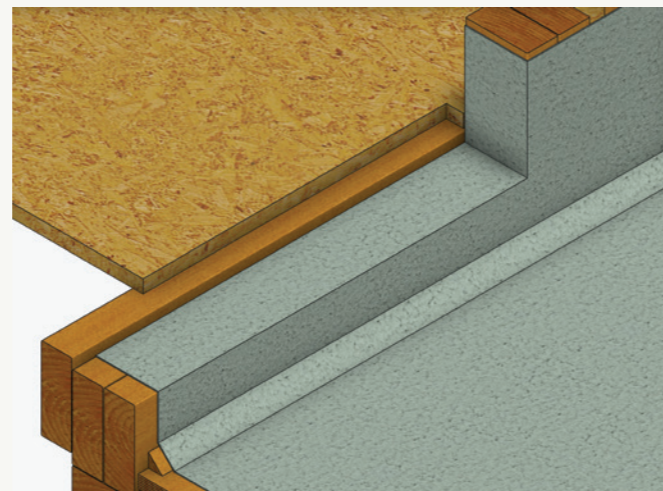
BY TREVOR PRINGLE,
ANZIA, BRANZ PRINCIPAL
WRITER

Getting waterproof decks right

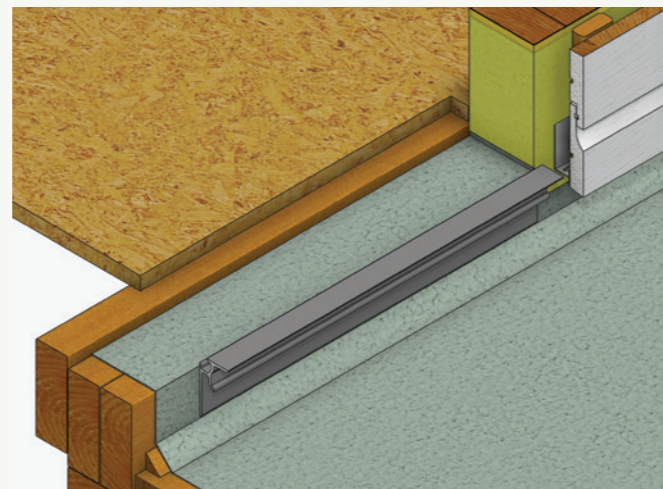
One area of building that can cause issues is having sufficient clearance between the bottom of the cladding and a waterproof deck.

E2/AS1 HAS SOME SPECIFIC REQUIREMENTS that must be met for clearances between a cladding and a waterproof deck. These include:

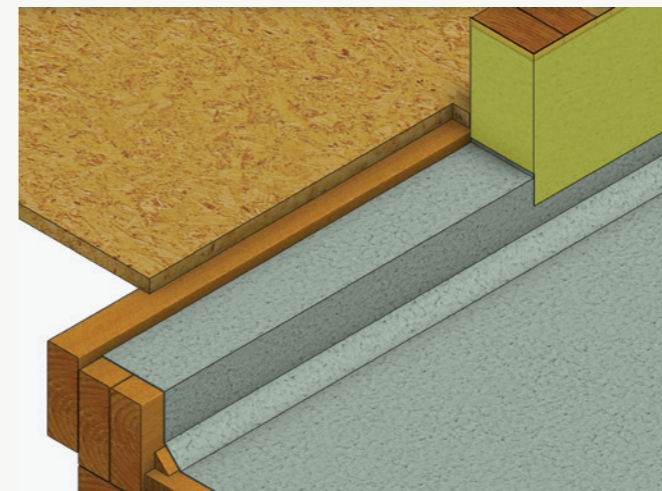
- a maximum area of 40 m²
 - a membrane upturn at the wall junction of at least 150 mm
 - slope the membrane away from the wall
 - lapping the wall underlay over the membrane upstand
 - a clearance of at least 35 mm between the bottom of the cladding and the highest point on the deck surface
 - for claddings installed over a cavity:
 - providing drainage from the cavity behind the cladding incorporating a cavity closure
 - forming a drip edge (10–15 mm depending on cladding type) along the bottom edge
 - a step down to the waterproof surface at doorways of 100 mm minimum (an alternative not detailed is for a 100 mm high threshold or step where the floor level and deck substrate are at the same level)
 - a minimum deck slope for drainage of 2°
 - no finish adhered to the tiles – any additional walk-on or protective surface must be removable
 - no downpipes discharging onto the deck.
- In addition, it is considered good design of waterproof decks to:
- have a minimum of two drainage outlets, each with their own overflow
 - specify flood testing on completion
 - protect the membrane after it is laid. ◀



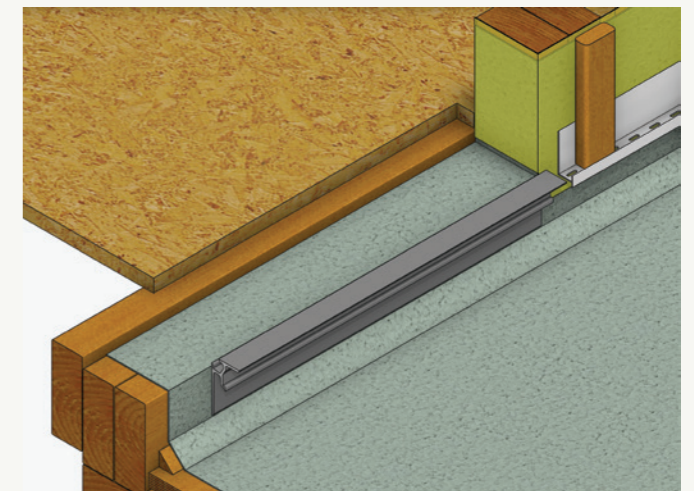
Step 1 Construction sequence.



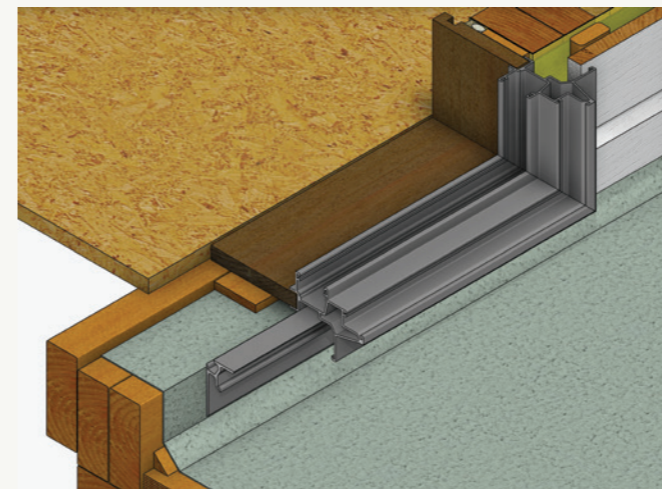
Step 4



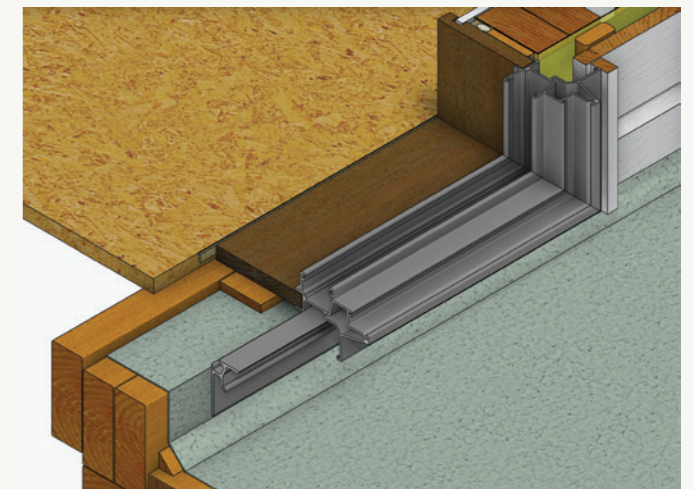
Step 2



Step 3



Step 5



Step 6