

DESIGN
RIGHT



BY ALIDE ELKINK,
FREELANCE TECHNICAL
WRITER, WELLINGTON

Detailing garage door heads

The previous issue of *Build* looked at roof junction flashings. Here, we cover the sometimes overlooked requirements for flashing garage door heads with a timber lintel.

ALTHOUGH THE NEED for flashings at external door and window heads is generally well understood, there is not the same understanding about the need for flashing at garage door heads.

Building consent authorities are receiving applications for building consents in which garage door head details do not follow the same

requirements for flashing as for other door and window head details.

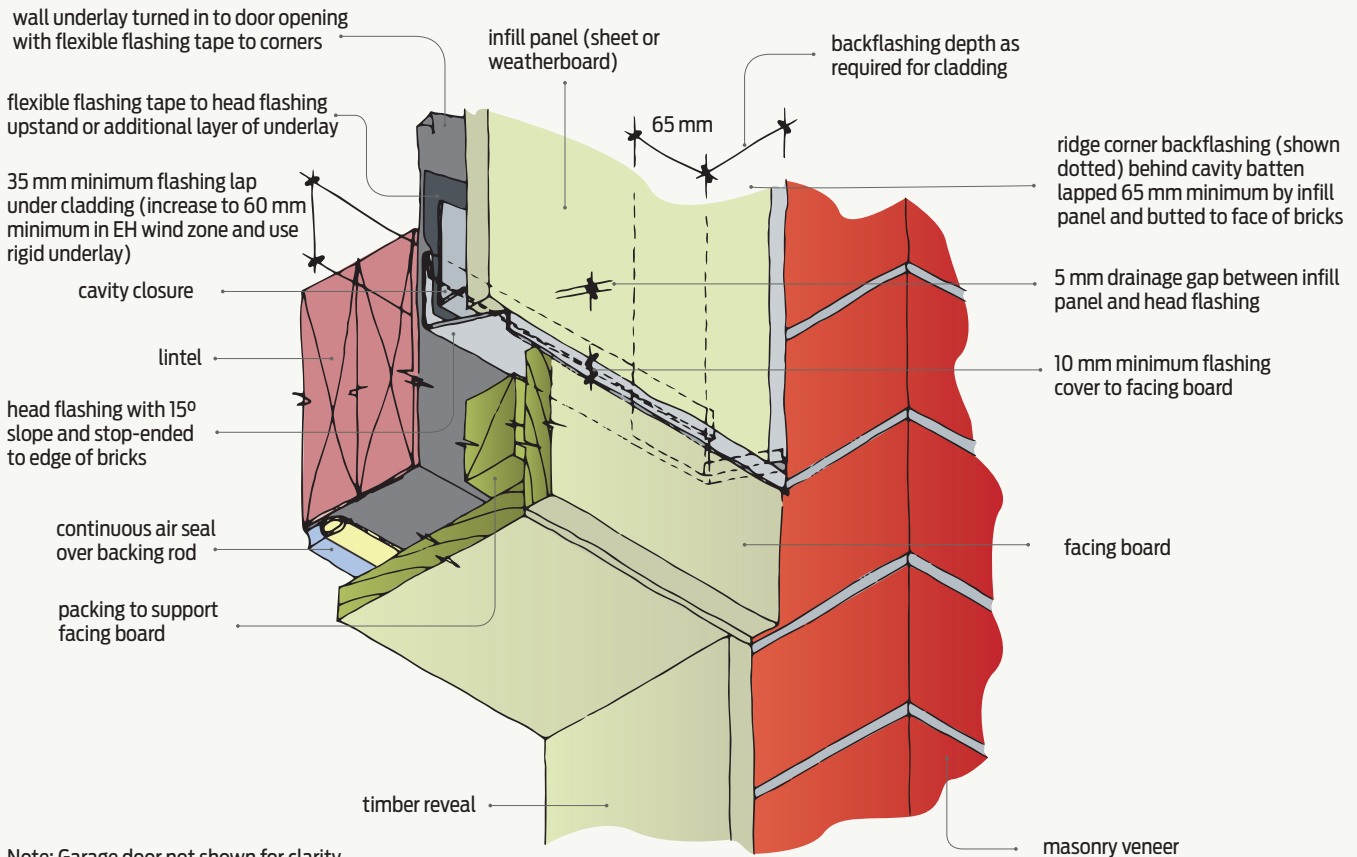
Flashing needed for garage doors

The requirements for flashing garage door openings are simple. They are the same as for external door and window details.

Acceptable Solution E2/AS1 to Building Code

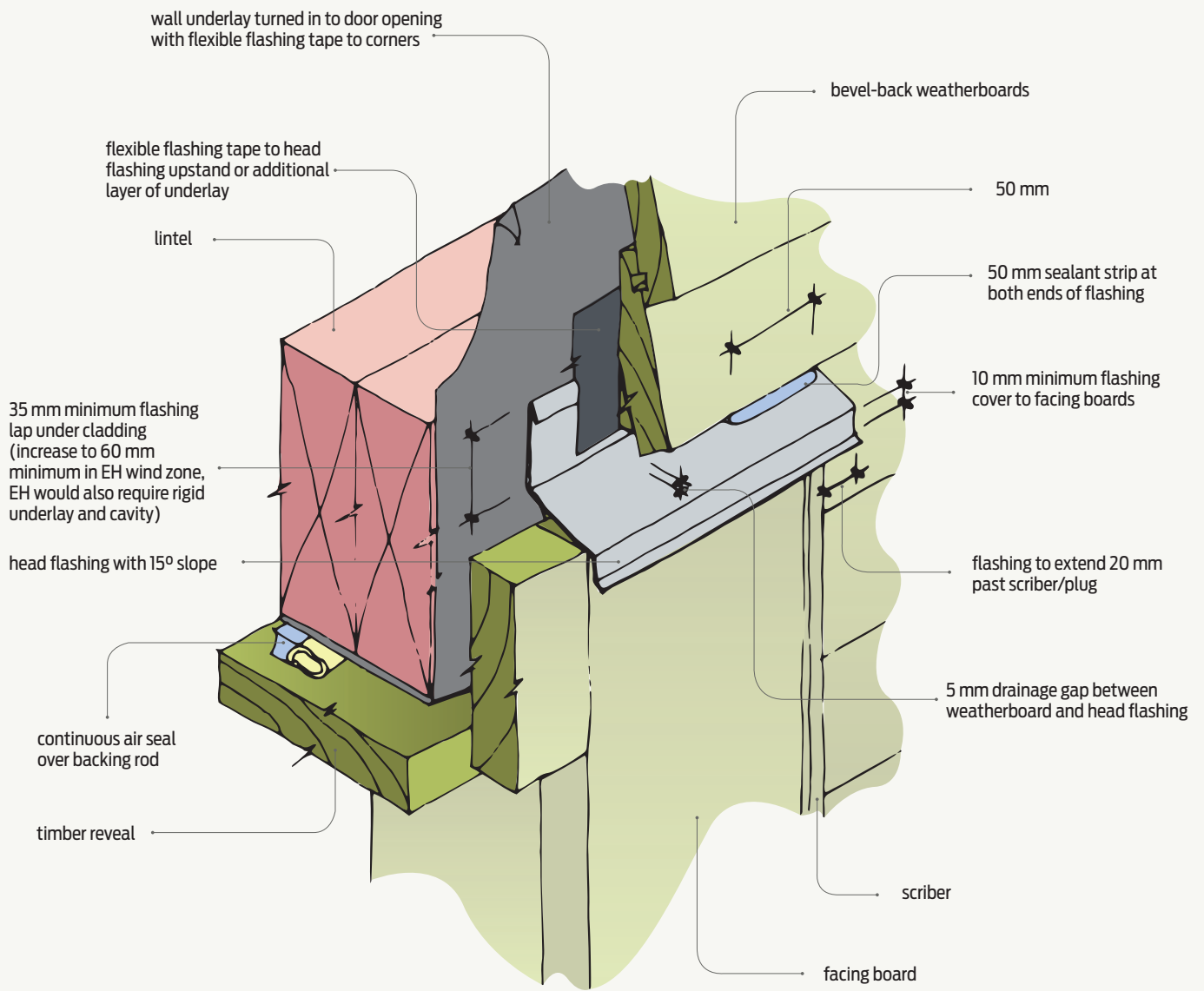
clause E2 *External moisture* is quite prescriptive in terms of head flashing profile when used as a means of compliance.

Figures 1–3 are details based on E2/AS1 principles for both direct-fixed and cavity construction bevel-back horizontal weatherboard cladding and where an infill panel is used with masonry veneer cladding. ◀



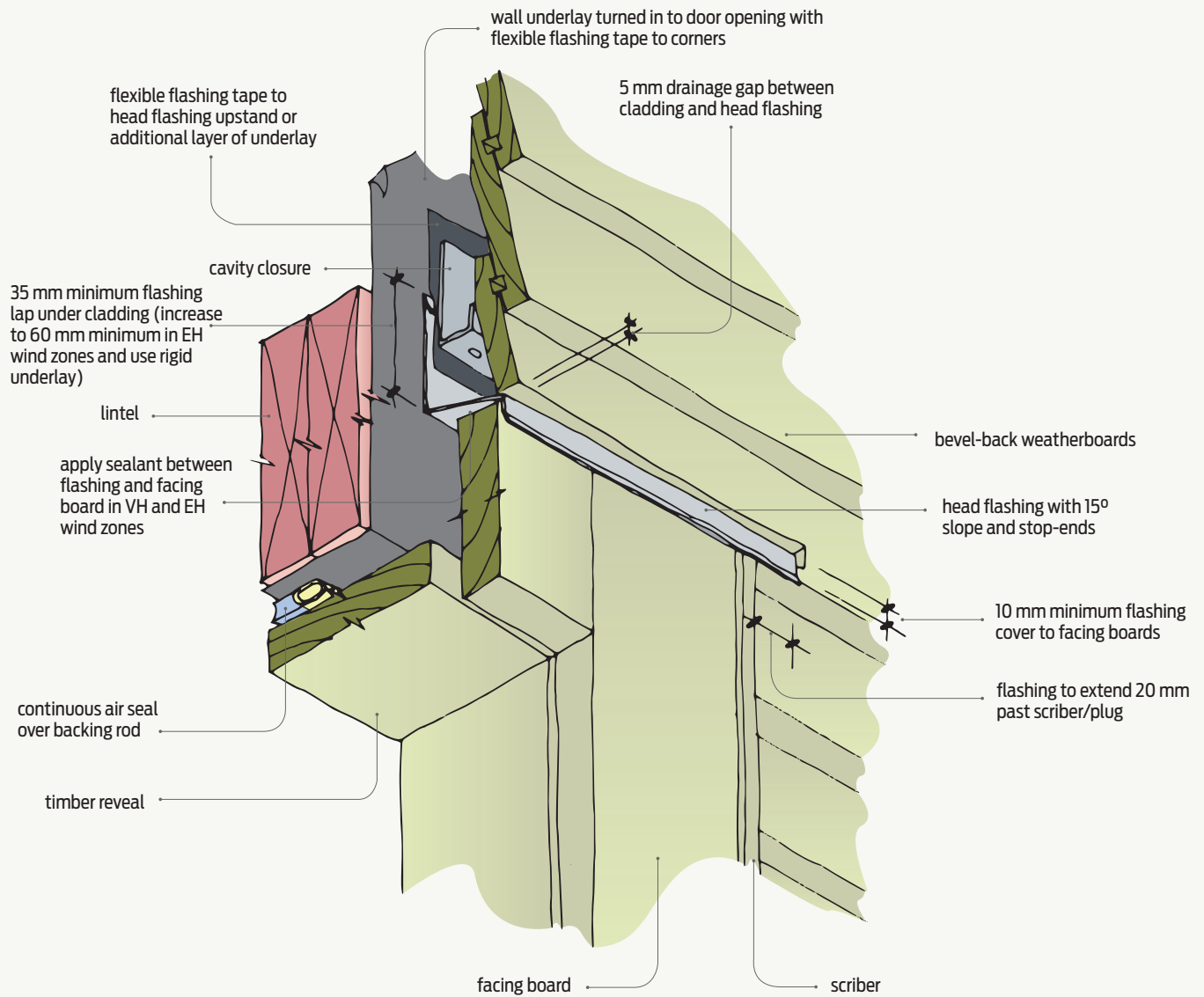
Note: Garage door not shown for clarity.

Figure 1 Garage door head detail with masonry veneer cladding and infill panel over the door.



Note: Garage door not shown for clarity.

Figure 2 Garage door head detail with direct-fixed bevel-back horizontal weatherboard cladding.



Note: Garage door not shown for clarity.

Figure 3 Garage door head detail with bevel-back horizontal weatherboard cladding over a cavity.