

DESIGN
RIGHT



BY TREVOR PRINGLE,
ANZIA, BRANZ PRINCIPAL
WRITER

Tricky lean-to junctions

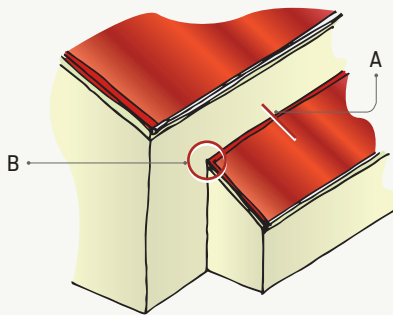
GOOD DETAILING OF THE ROOF WALL JUNCTION FOR LEAN-TOS IS IMPORTANT FOR THE WEATHERTIGHTNESS OF A BUILDING, BUT THIS JUNCTION CAN PRESENT SOME CHALLENGES.

ROOF WALL JUNCTIONS can be classed as simple, such as a standard horizontal apron flashing (see A in Figure 1), or complex, such as where the previous apron flashing terminated within the wall area (see B in Figure 1).

Detail A is covered by E2/AS1, but detail B is not.

Building up the detail

Key elements to address with the termination of the flashing at B are:



- preventing wind-blown water getting under the edge of the flashing laid over the roof by downturning the end of the flashing cladding to the lean-to
- back flashing the internal corner and ensuring the back flashing extends up behind the barge-board and the apron flashing upstand.

Figures 2–7 outline the construction sequence for one option for detailing this tricky junction. ▶

Figure 1 Lean-to

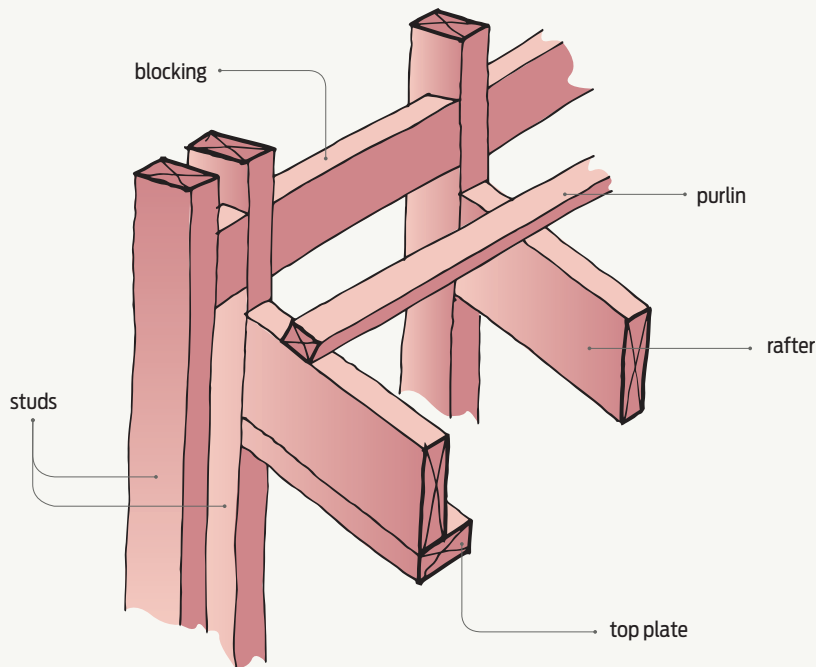


Figure 2 Construction sequence step 1 – Framing.

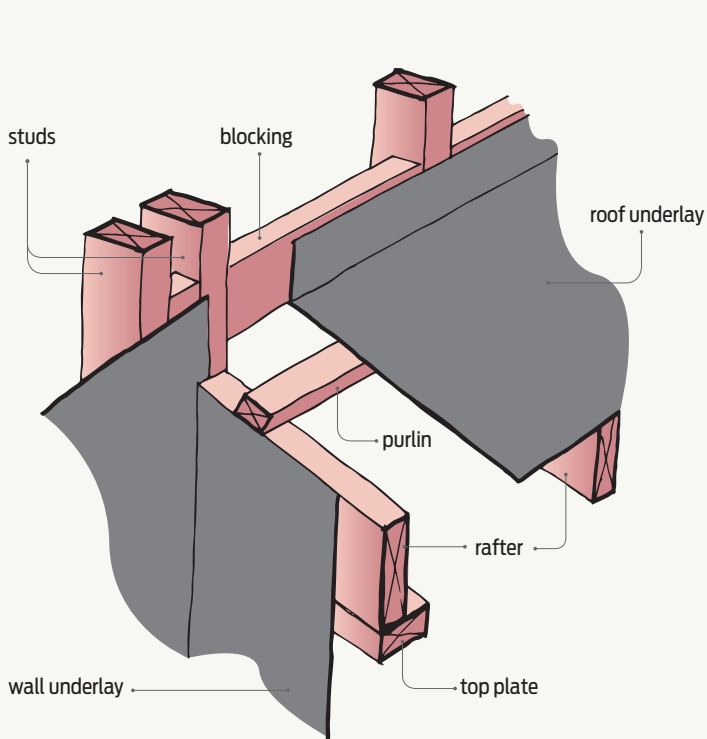


Figure 3 Step 2 – Wall and roof underlay.

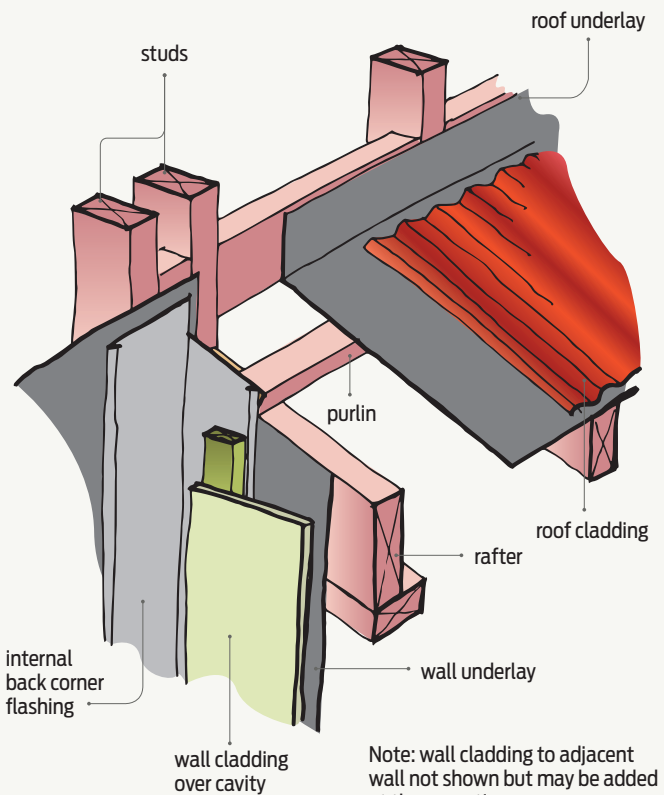


Figure 4 Step 3 – Back flashing internal corner.

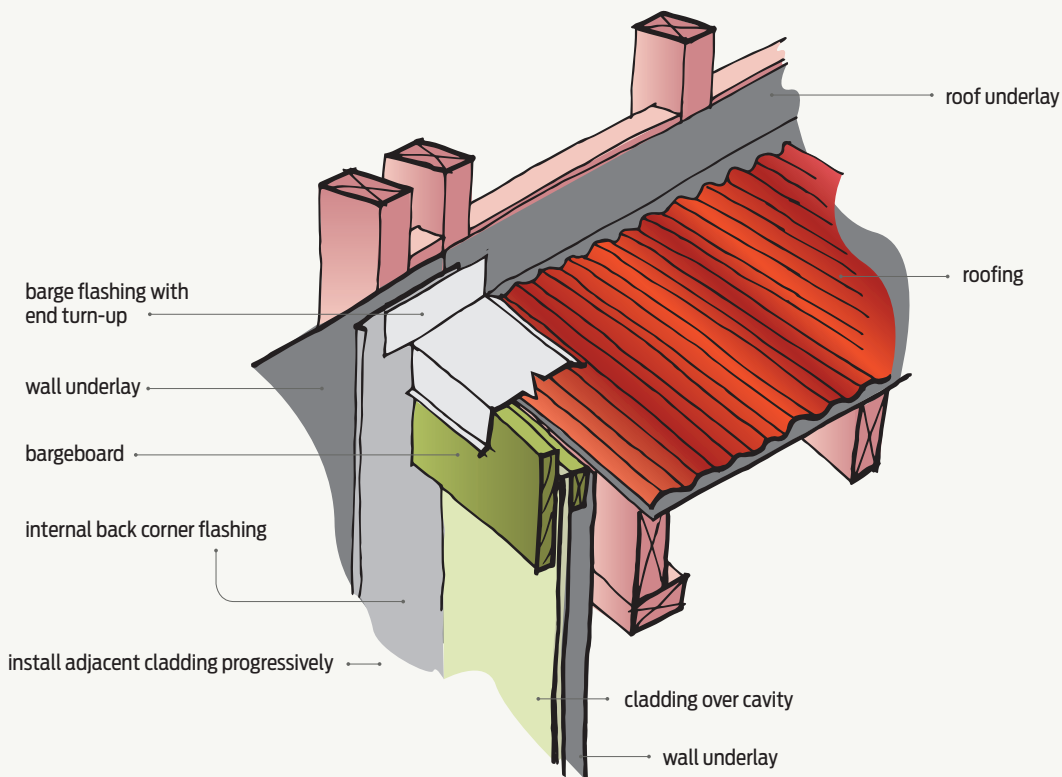


Figure 5 Step 4 – Installing barge flashing.

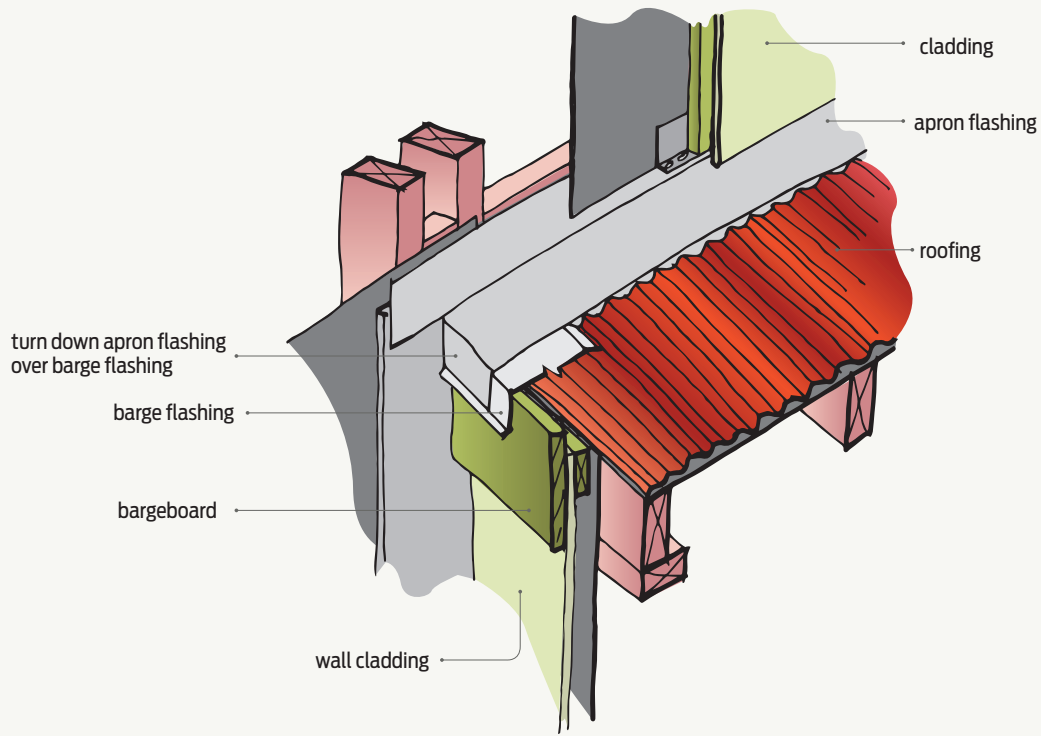


Figure 6 Step 5 – Install apron flashing.

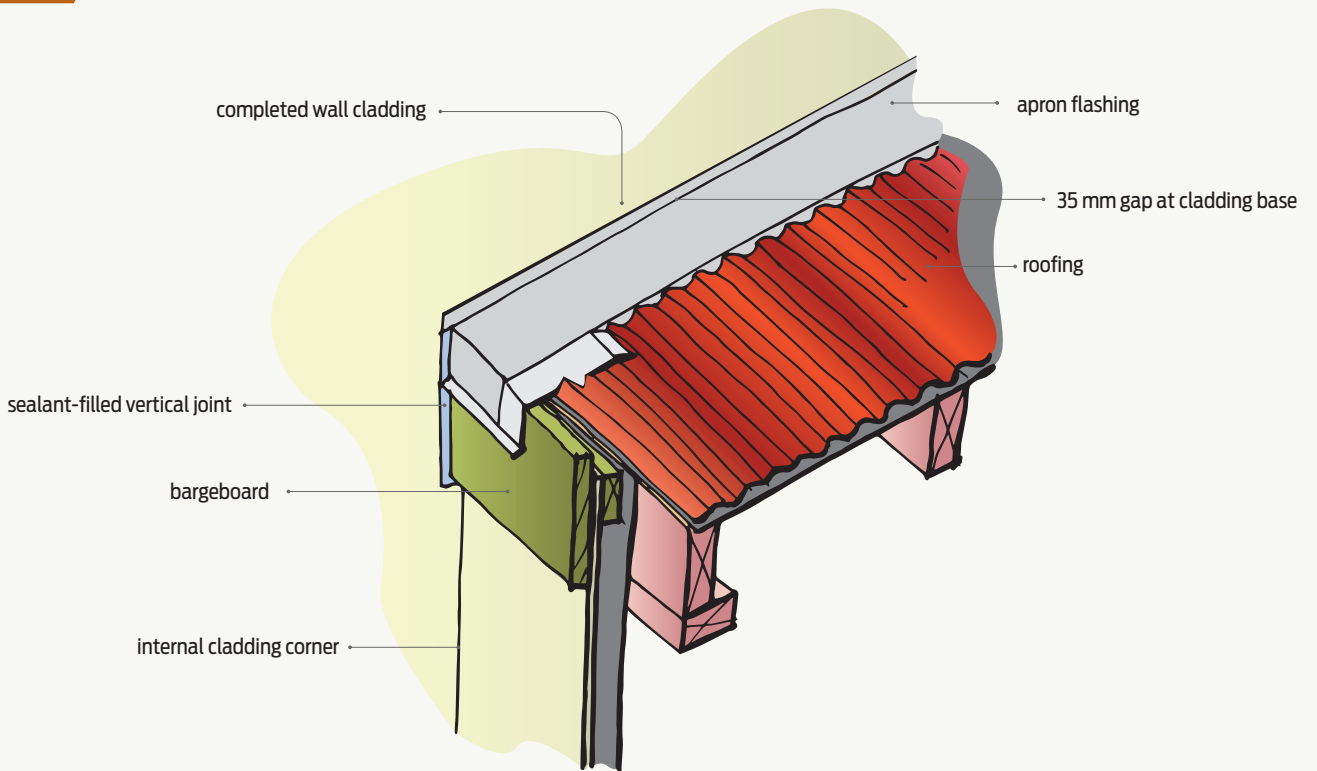


Figure 7 Step 6 – Completed detail.