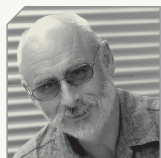


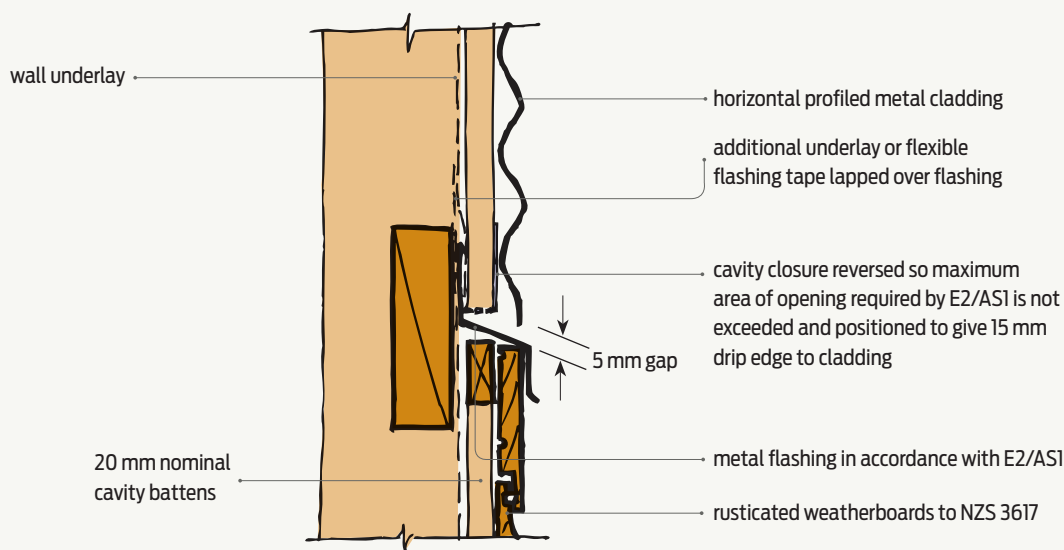


# At the crossroads



**BY TREVOR PRINGLE,**  
ANZIA, BRANZ PRINCIPAL  
WRITER, WELLINGTON

THE JUNCTIONS BETWEEN DIFFERENT CLADDING MATERIALS CAN PRESENT A FEW CHALLENGES FOR DESIGNERS. BRANZ HAS DEVELOPED SOME DETAILS TO HELP FILL THE GAP.



**Figure 1** Junction detail for horizontal profiled metal and rusticated weatherboards on cavity.

**E2/AS1** has junction details for cladding materials, including the top and bottom of claddings, internal corners, external corners or the interface between the cladding and aluminium window and door joinery.

However, there are no details within the Acceptable Solution that cover junctions between different cladding materials.

## Often need flashing

In many cases, the junction between different materials is best designed incorporating a flashing shaped to accommodate the peculiarities of the different cladding, such as:

- substantially different profile shapes

- thickness differences – both the material and the profile
- transitions between direct-fixed and cavity claddings or vice versa.

## Weathertight details

For some years, BRANZ has had junction details available in BRANZ Weathertight Solutions. This series of books includes:

- Volume 1: *Horizontal Weatherboards*
- Volume 2: *Stucco*
- Volume 3: *Profiled Metal*
- Volume 4: *Masonry* (covers both veneer and solid construction).

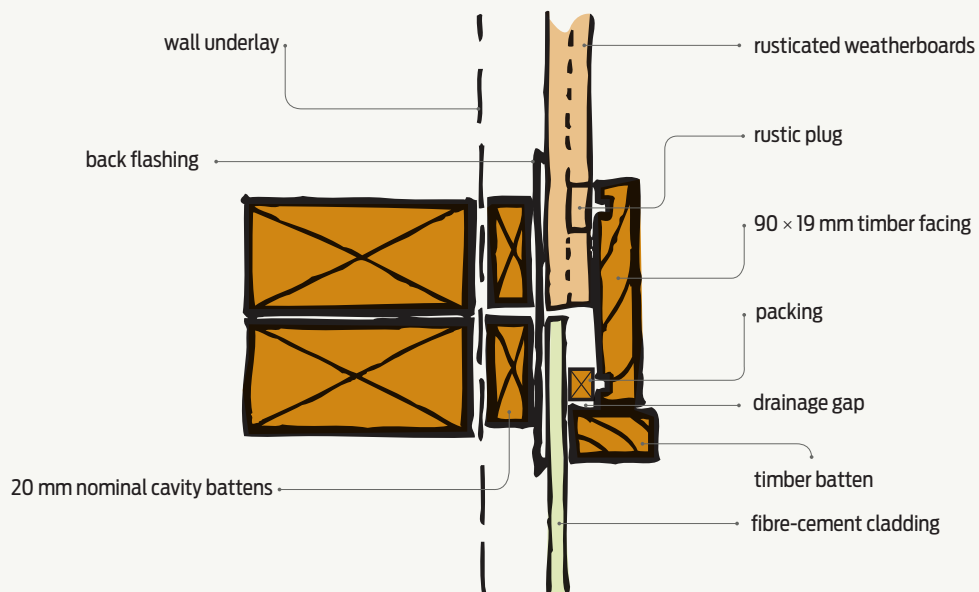
While these details are not an Acceptable Solu-

tion, they do provide solutions for horizontal and vertical junctions between a range of cladding materials and can be used to support the consent application for an alternative method. Figures 1–3 are examples from Volume 1.

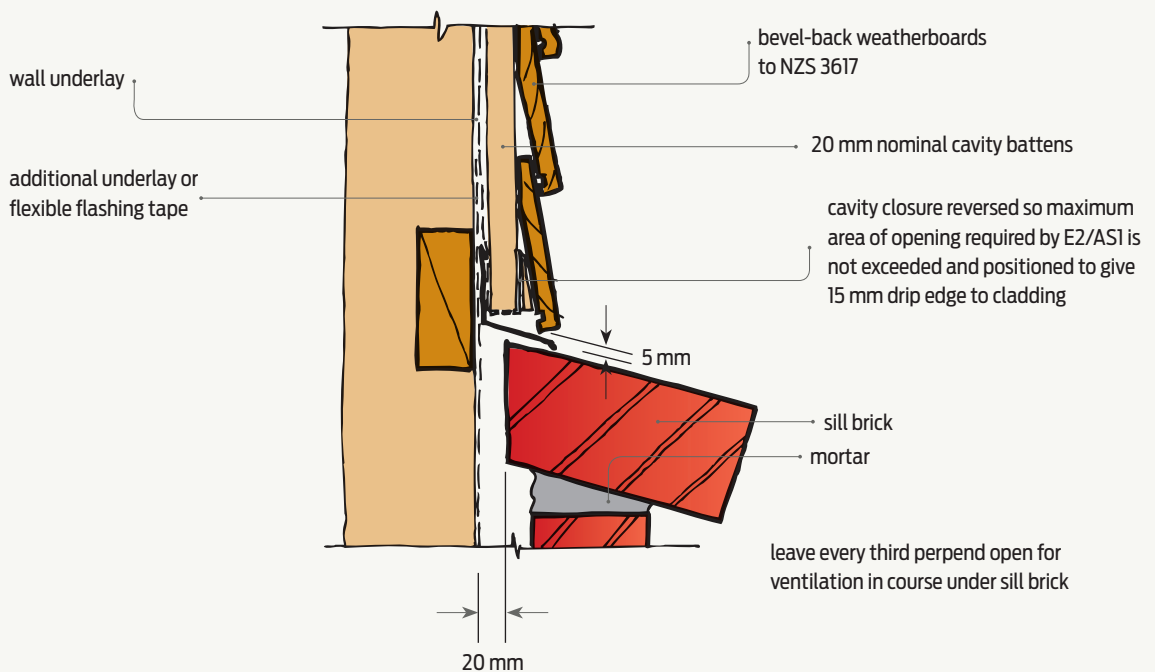
## Individual CAD details also available

Individual junction details can also be purchased from the BRANZ Shop in pdf or cad/dwg formats. These have recently been updated to be compatible with the latest CAD software.

**Note** To purchase Weathertight Solutions or Remediation Details, see the BRANZ Shop at [www.branz.co.nz](http://www.branz.co.nz). ➤



**Figure 2** Fibre-cement sheet junction abutting weatherboards on cavity.



**Figure 3** Masonry veneer junction with weatherboards on cavity.